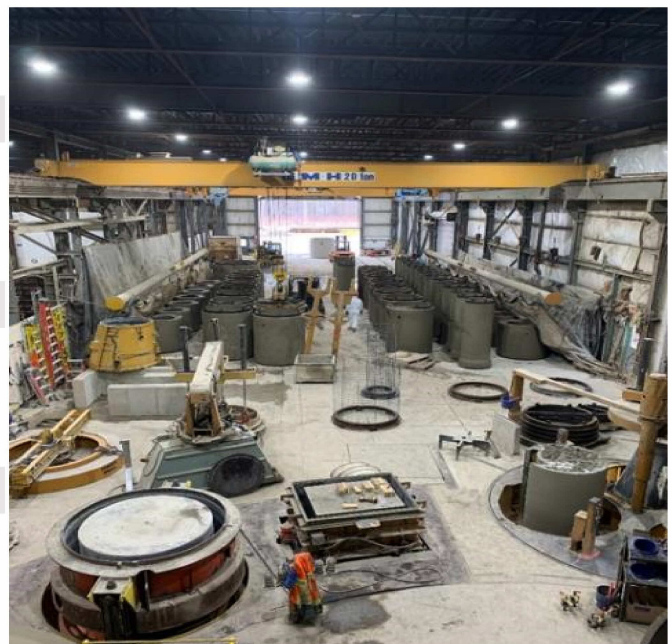




*Partnering with you to provide dependable outcomes through creative precast solutions*

TABLE OF CONTENTS

- 3** Reinforced Concrete Pipe
- 4** Reinforced Concrete Pipe Tees
- 5** Reinforced Concrete Pipe Bends
- 6** Catchbasins & Grating
- 7** Grade Adjustment & Miscellaneous
- 8** Maintenance Holes
- 10** Maintenance Hole Estimating Table
- 12** Square Maintenance Holes & Boots
- 13** Headwalls
- 14** Headwall Grating
- 15** Box Culverts OPSS 1821
- 16** Custom Box Culverts
- 17** Chambers
- 18** Drain Tile
- 19** Geotextile
- 20** Terms & Conditions



**REINFORCED CONCRETE PIPE (CSA A257.2)**

**Price per Metre**

INSIDE DIAMETER (mm)	50D (CLASS II)	65D (CLASS III)	100D (CLASS IV)	140D (CLASS V)
525	\$197.30	\$197.30	\$230.50	\$272.00
600	\$265.40	\$265.40	\$305.40	\$359.00
675	\$407.20	\$407.20	\$463.70	\$543.00
750	\$536.70	\$536.70	\$613.30	\$717.00
825	\$622.40	\$622.40	\$791.80	\$832.10
900	\$746.90	\$746.90	\$854.30	\$997.30
975	\$819.40	\$862.60	\$981.40	\$1,148.90
1050	\$938.40	\$985.40	\$1,128.40	\$1,314.40
1200	\$1,176.00	\$1,235.40	\$1,413.40	\$1,646.70
1350	\$1,512.50	\$1,588.00	\$1,816.50	\$2,115.70
1500	\$1,850.10	\$1,941.40	\$2,219.60	\$2,589.40
1650	\$2,215.20	\$2,327.70	\$2,660.40	\$3,101.70
1800	\$2,677.00	\$2,814.30	\$3,213.00	\$3,749.30

Notes:

- 1) Prices include a pre-lubricated rubber gasket
- 2) Scribed Holes & Knockouts - \$175.70 each up to 1350mm, \$348.60 each 1500mm and larger
- 3) Reducers and Increases - Multiply the price per meter of the larger pipe x 6.5
- 4) Standard pipe length: 2.438m

**Dimensions and Mass**

INSIDE DIAMETER (mm)	OUTSIDE DIAMETER (mm)	WALL THICKNESS (mm)	MASS PER PIECE (kg/piece)	STANDARD TRUCKLOAD
525	711	89	1,061	34
600	800	95	1,276	28
675	889	101	1,530	23
750	978	108	1,682	20
825	1,066	114	2,094	17
900	1,156	121	2,160	15
975	1,244	127	2,818	13
1050	1,333	133	2,919	12
1200	1,512	146	3,441	11
1350	1,689	157	4,561	9
1500	1,866	171	4,964	7
1650	2,040	182	6,612	6
1800	2,223	197	7,338	5

## TEES AND WYES (FITTINGS)

Price per Fitting

BRANCH SIZE (mm)	525	600-825	900-1200	1350-1800
100	\$231.20	\$243.00	\$309.90	\$420.40
125	\$254.00	\$266.00	\$340.30	\$460.60
150	\$279.90	\$294.30	\$374.70	\$508.40
200	\$373.50	\$392.10	\$500.10	\$677.90
250	\$418.10	\$438.50	\$559.40	\$758.90
300	\$569.10	\$805.90	\$1,045.70	\$1,481.60
375	\$688.20	\$921.60	\$1,240.90	\$1,738.90
450	\$841.60	\$1,041.80	\$1,365.00	\$1,862.30
525	\$909.00	\$1,074.40	\$1,398.90	\$1,896.10
600		\$1,344.20	\$1,676.00	\$2,173.90
675		\$1,913.40	\$2,170.50	\$2,668.70
750		\$2,471.20	\$2,694.50	\$3,191.90
825		\$2,826.80	\$3,015.40	\$3,513.70
900			\$3,506.90	\$4,004.90
975			\$3,992.80	\$4,449.90
1050			\$4,535.00	\$4,946.60
1200			\$5,596.10	\$5,939.10
1350				\$7,405.80
1500				\$8,944.00
1650				\$10,608.80
1800				\$12,739.80

## Notes:

- 1) Add the above fitting price to the cost of one length of reinforced concrete pipe
- 2) Maintenance hole tees are calculated the same as pipe tees
- 3) Branches 300mm and smaller are for SDR-35 PVC pipe only
- 4) Branches 375mm and larger are for concrete pipe only
- 5) Special angle branches can be manufactured upon request for additional fees

**PIPE PLUGS AND CAPS**

**Details & Price per Each**

INSIDE DIAMETER (mm)	MASS PLUS (kg)	MASS CAP (kg)	PRICE (\$)
525	69	270	\$272.30
600	86	325	\$359.00
675	106	384	\$543.00
750	130	472	\$716.90
825	154	527	\$832.10
900	180	618	\$997.50
975	865	865	\$1,148.80
1050	898	898	\$1,314.50
1200	1,168	1,168	\$1,646.70
1350	1,572	1,572	\$2,115.70
1500	1,908	1,908	\$2,589.30
1650	2,156	2,156	\$3,101.70
1800	2,554	2,554	\$3,749.30

**PIPE BENDS**

**Price per Each**

INSIDE DIAMETER (mm)	PIPE CLASSIFICATION			
	50D (CLASS II)	65D (CLASS III)	100D (CLASS IV)	140D (CLASS V)
525	\$1,065.90	\$1,065.90	\$1,246.10	\$1,467.60
600	\$1,354.70	\$1,354.70	\$1,555.70	\$1,830.40
675	\$2,036.40	\$2,036.40	\$2,318.70	\$2,714.80
750	\$2,684.20	\$2,684.20	\$3,068.70	\$3,585.10
825	\$3,112.20	\$3,112.20	\$3,957.80	\$4,160.10
900	\$3,731.10	\$3,731.10	\$4,268.90	\$4,982.70
975	\$4,097.00	\$4,314.50	\$4,908.40	\$5,740.70
1050	\$4,691.20	\$4,927.70	\$5,641.00	\$6,572.00
1200	\$5,878.20	\$6,176.20	\$7,066.50	\$8,234.10
1350	\$7,564.60	\$7,939.00	\$9,082.60	\$10,578.30
1500	\$9,247.90	\$9,705.00	\$11,097.80	\$12,947.40
1650	\$11,077.50	\$11,638.00	\$13,300.40	\$15,503.10
1800	\$13,383.40	\$14,069.60	\$16,065.70	\$18,745.50

Notes:

1500mm Max Angle = 84°

1650mm Max Angle = 74°

1800mm Max Angle = 71°

**CATCHBASINS & DITCH INLETS**

**Price per Metre**

SIZE & SPEC. (mm)		DESCRIPTION	WEIGHT (kg per m)	PRICE (\$ per m)
600 x 600	OPSD 705.010	Catchbasin	930	\$776.60
600 x 600	OPSD 705.030	Ditch Inlet Catchbasin	930	\$1,160.10
600 x 840	LONDON SEW-3.0	Curb Inlet Catchbasin	1,060	\$1,228.40
600 x 1200	OPSD 705.040	Ditch Inlet Catchbasin	2,336	\$1,800.80
600 x 1450	OPSD 705.020	Twin Inlet Catchbasin	1,640	\$1,506.90
600 x 600	AGRICULTURAL	Municipal Drain Catchbasin	930	\$502.80
900 x 1200	AGRICULTURAL	Municipal Drain Catchbasin	1,470	\$1,139.70

Notes:

- 1) Catchbasins to have minimum charge of 1.07m height
- 2) All Catchbasin riser sections to have minimum charge of 0.457m height

**CATCHBASIN GRATES & CONCRETE LIDS**

**Price per Each**

SIZE AND TYPE (mm)	OPSD / SPEC	PRICE (\$)
Ditch Inlet Type A (762 x 768)	403.010	\$924.10
Ditch Inlet Type B (762 x 1338)	403.010	\$1,360.00
Ditch Inlet Type C (762 x 1465)	403.010	\$1,493.30
600 x 600 Light Duty	Municipal	\$388.80
600 x 600 Heavy Duty	Municipal	\$521.20
600 x 600 Birdcage	Municipal	\$521.20
900 x 1200 Light Duty	Municipal	\$604.80
900 x 1200 Heavy Duty	Municipal	\$936.00
900 x 1200 Birdcage	Municipal	\$763.20
600 X 600 Concrete	Municipal	\$345.50
900 x 1200 Concrete	Municipal	\$388.80
Well Lid 42" O.D.	Municipal	\$352.90

**GRADE ADJUSTMENT RINGS**

**Details & Price per Each**

TYPE & DESCRIPTION	HEIGHT (mm)	MASS (kg)	PRICE (\$)
<b>Single Pricing</b>			
Maintenance Hole Adjuster	50	52	\$72.00
Maintenance Hole Adjuster	75	75	\$75.90
Maintenance Hole Donut Adjuster	150	220	\$264.10
Maintenance Hole Donut Adjuster	300	440	\$338.10
Catchbasin Adjuster	50	36	\$68.00
Catchbasin Adjuster	75	51	\$72.20
<b>Bundle Pricing</b>			
Maintenance Hole Adjuster Bundle (10)	50	624	\$720.00
Maintenance Hole Adjuster Bundle (8)	75	600	\$607.20
Catchbasin Adjuster Bundle (10)	50	432	\$680.00
Catchbasin Adjuster Bundle (8)	75	408	\$577.60

**ACCESSORIES**

**Details & Price per Each**

DESCRIPTION	OPSD / SPEC	PRICE (\$)
4 Ton Swift Lift	-	\$641.90
8 Ton Swift Lift	-	\$1,207.90
15-20 Ton Swift Lift	-	\$1,771.30
Goss Trap c/w Plug	-	\$1,084.30
Maintenance Hole Step - Hollow Alum	405.010	\$42.00
Maintenance Hole Step - Solid Alum	405.020	\$60.60
Maintenance Hole Step - Poly Coated	-	\$123.80
Butyl Tape (25mm x 25mm x 4.4m)	-	\$44.30

## CIRCULAR MAINTENANCE HOLES

## Pricing &amp; Details

## OPSD 701.010

1200mm Component	HEIGHT (m)	WEIGHT (kg)	PRICE (\$)
Monobase	0.914	1,983	\$1,958.70
	1.219	2,392	\$2,320.60
	1.524	2,801	\$2,682.20
	1.828	3,208	\$3,042.70
Base Slab	0.305	759	\$927.10
Riser Section	0.305 - 1.828	1,340/m	\$1,185.60/m
Flat Cap	0.305	770	\$927.10
Taper Top	1.320	2,130	\$1,627.10
Safety Landing	-	-	\$2,221.80
Prebenching	-	-	\$1,144.30

## OPSD 701.011

1500mm Component	HEIGHT (m)	WEIGHT (kg)	PRICE (\$)
Monobase	0.914	2,647	\$3,321.80
	1.219	3,244	\$4,041.20
	1.524	3,832	\$4,587.40
	1.828	4,669	\$5,135.90
Base Slab	0.305	1,640	\$1,847.20
Riser Section	0.305 - 2.438	1,935/m	\$1,798.10/m
Transition Slab	0.450	1,229	\$1,847.20
Flat Cap	0.450	1,545	\$1,847.20
Safety Landing	-	-	\$3,128.20
Prebenching	-	-	\$1,560.20

## Notes:

- 1) Hollow aluminum steps included (OPSD 405.010)
- 2) Alternative monolithic base heights available
- 3) Manufactured to Ontario Provincial Standards



## CIRCULAR MAINTENANCE HOLES

## Pricing &amp; Details

## OPSD 701.012

1800mm Component	HEIGHT (m)	WEIGHT (kg)	PRICE (\$)
Monobase	0.914	4,471	\$4,410.20
Base Slab	0.305	2,630	\$2,491.00
Riser Section	0.610 - 2.438	/m	\$2,555.50/m
Transition Slab	0.450	2,585	\$2,491.00
Flat Cap	0.450	2,585	\$2,491.00
Safety Landing	-	-	\$4,059.20
Prebenching	-	-	\$1,901.70

## OPSD 701.013

2400mm Component	HEIGHT (m)	WEIGHT (kg)	PRICE (\$)
Base Slab	0.305	4,480	\$4,936.10
Riser Section	0.610 - 2.134	4,600/m	\$4,555.70/m
Transition Slab	0.450	4,980	\$4,936.10
Flat Cap	0.450	4,980	\$4,936.10
Safety Landing	-	-	\$6,347.30

## OPSD 701.014

3000mm Component	HEIGHT (m)	WEIGHT (kg)	PRICE (\$)
Base Slab	0.305	8,142	\$8,312.70
Riser Section	0.610 - 2.438	6,322/m	\$7,127.20/m
Transition Slab	0.450	8,142	\$8,312.70
Flat Cap	0.450	8,142	\$8,312.70
Safety Landing	-	-	Price on request

## OPSD 701.015

3600mm Component	HEIGHT (m)	WEIGHT (kg)	PRICE (\$)
Base Slab	0.305	10,500	\$14,679.30
Riser Section	0.610 - 2.438	10,808/m	\$15,532.40/m
Transition Slab	0.450	10,500	\$14,679.30
Flat Cap	0.450	10,500	\$14,679.30
Safety Landing	-	-	Price on request

## MAINTENANCE HOLE ESTIMATING TABLE

Pricing

DEPTH (m)	1200 (mm)	DEPTH (m)	1500 (mm)
1.00	\$2,525	1.54	\$5,606
1.15	\$2,706	1.69	\$6,155
1.30	\$2,886	1.85	\$6,436
1.46	\$3,068	1.99	\$6,706
1.61	\$3,248	2.14	\$6,983
1.76	\$3,429	2.30	\$7,253
1.91	\$3,610	2.45	\$7,530
2.07	\$3,794	2.65	\$7,800
2.22	\$3,970	2.80	\$8,209
2.47	\$3,587	2.96	\$8,483
2.62	\$3,767	3.11	\$8,571
2.78	\$3,948	3.26	\$8,844
2.93	\$4,130	3.41	\$8,932
3.08	\$4,310	3.57	\$9,206
3.23	\$4,495	3.67	\$9,295
3.39	\$4,670	3.82	\$8,909
3.54	\$4,857	3.96	\$9,186
3.69	\$5,033	4.12	\$9,274
3.84	\$5,218	4.28	\$9,547
4.00	\$5,393	4.43	\$9,632
4.15	\$5,578	4.58	\$9,937
4.30	\$5,754	4.73	\$9,992
4.45	\$6,070	4.89	\$10,268
4.61	\$6,116	5.04	\$10,354
4.76	\$6,301	5.19	\$12,821
4.91	\$6,477	5.34	\$12,906
5.00	\$9,061	5.50	\$13,182
5.06	\$9,061	5.65	\$13,277
5.22	\$9,246	5.80	\$13,544
5.37	\$9,422	5.95	\$13,629
5.52	\$9,608	6.11	\$13,906
5.67	\$9,784	6.25	\$13,990
5.82	\$9,969	6.41	\$14,267
5.98	\$10,145	6.56	\$14,354
6.13	\$10,331	6.72	\$14,628
6.28	\$10,507	6.87	\$14,713
6.44	\$10,692	7.03	\$14,990
6.59	\$10,868		

\*\* See table notes on page 11

**MAINTENANCE HOLE ESTIMATING TABLE**

**Pricing**

DEPTH (m)	1800 (mm)	DEPTH (m)	2400 (mm)
1.97	\$8,878	1.75	\$15,452
2.12	\$9,659	2.06	\$16,848
2.27	\$9,659	2.36	\$18,216
2.42	\$10,436	2.67	\$19,606
2.58	\$10,436	2.87	\$21,250
2.63	\$10,824	3.18	\$22,265
2.78	\$10,813	3.48	\$22,265
2.93	\$11,203	3.79	\$22,639
3.08	\$11,203	4.09	\$22,987
3.24	\$11,563	4.20	\$23,354
3.39	\$11,563	4.50	\$23,354
3.54	\$11,925	4.80	\$23,354
3.64	\$11,925	5.11	\$25,914
3.79	\$11,925	5.41	\$26,424
3.95	\$12,024	5.72	\$26,638
4.10	\$12,024	6.02	\$27,012
4.25	\$12,264	6.33	\$27,363
4.40	\$12,240	6.63	\$27,749
4.56	\$12,624	6.93	\$28,218
4.71	\$12,598	7.24	\$28,526
4.87	\$12,986	7.54	\$28,819
5.01	\$12,986	7.84	\$29,210
5.17	\$15,309		
5.32	\$15,309		
5.47	\$15,675		
5.63	\$15,675		
5.78	\$16,041		
5.93	\$16,041		
6.08	\$16,416		
6.24	\$16,416		
6.39	\$16,776		
6.54	\$16,776		
6.69	\$17,137		
6.85	\$17,137		
7.00	\$17,490		
7.15	\$17,490		
7.3	\$17,860		

**NOTES:**

Depth represents the difference between finished grade and the lowest invert.

Prices are rounded to the nearest dollar.

1500mm and 1800mm manholes transition at 1.8m headroom, 2400mm manholes transition at 2.4m headroom.

1200mm safety landings are included at 5.0m depths for all sizes.

Prices do not include: castings, adjustment, flexible connectors, pre benching, drop structures or other accessories.

## MAINTENANCE HOLES

## Pricing &amp; Details

1200mm x 1200mm	HEIGHT	WEIGHT	PRICE
Component	(m)	(kg)	(\$)
Monobase	0.914	3,472	\$5,205.70
	1.219	4,349	\$6,278.30
	1.524	5,225	\$7,350.30
	1.828	6,100	\$8,422.40
Base Slab	0.229	1,505	\$2,081.80
Riser Section	0.305 - 1.98	2,873/m	\$3,515.10/m
Flat Cap	0.229	1,505	\$2,081.80
Ditch Inlet Flat Cap	0.543	1,543	\$3,180.20

## FLEXIBLE PIPE CONNECTORS

## Pricing &amp; Details

INSIDE DIAMETER	PRESS SEAL #	CORE HOLE SIZE	PRICE
(mm)		(m)	(\$)
100	PSX 8QRS	200	\$326.40
125	PSX DD 8-11	200	\$326.40
150	PSX DD 9-6	229	\$326.40
200	PSX DD 12-8	300	\$326.40
250	PSX DD 13-10	330	\$426.50
300	PSX DD 16M	400	\$426.50
375	PSX DD 20Y	500	\$557.40
450	PSX DD 22M	550	\$670.20
525	PSX DD 26L	650	\$847.70
600	PSX DD 28A	700	\$948.30

## Notes:

- 1) Alternative monolithic base heights available
- 2) Torque wrench can be purchased for onsite boot installation

**OPSD 804.030 MODIFIED FLAT HEADWALLS**

**Details & Price per Each**

PIPE DIAMETER (mm)	LENGTH (mm)	HEIGHT (mm)	WEIGHT (kg)	PRICE (\$)
300	3,366	1,672	5,028	\$4,954.60
375	3,366	1,672	4,944	\$4,954.60
450	3,366	1,672	4,841	\$6,022.10
525	4,167	1,939	7,376	\$6,022.10
600	4,167	1,939	7,146	\$7,690.30
675	4,167	1,939	7,000	\$7,690.30
750	4,968	2,206	10,411	\$9,392.10
825	4,968	2,206	10,303	\$9,392.10
900	4,968	2,206	9,601	\$11,110.00

**OPSD 804.040 MODIFIED V - HEADWALLS**

**Details & Price per Each**

PIPE DIAMETER (mm)	BOTTOM WEIGHT (kg)	TOP WEIGHT (kg)	PRICE (\$)
Up to 825	7,831	7,595	\$24,170.80
900 - 1200	10,188	13,211	\$27,072.90
1350 - 1800	11,825	16,135	\$32,721.80
1950 - 2100	13,750	17,990	\$38,079.20
2250 - 2400	17,820	19,329	\$38,079.20

Notes:

- 1) Grating as per OPSD 804.050 (Sold Separately)
- 2) Elliptical pipe & box culvert headwalls available. Please call for pricing

**OPSD 804.050 HEADWALL GRATING**

**Price per Each**

PIPE DIAMETER (mm)	PRICE (\$)
300	\$1,217.00
375	\$1,217.00
450	\$1,340.10
525	\$1,340.10
600	\$1,439.30
675	\$1,439.30
750	\$1,705.70
825	\$1,705.70
900	\$1,740.40
975	\$1,994.30
1050	\$2,066.40
1200	\$2,225.30
1350	\$3,020.00
1500	\$3,337.70
1650	\$3,973.60
1800	\$4,609.00
2400	\$6,774.70

Notes:

1) Add the above grate price to an OPSD 804.030 or 804.040 headwall price

**BOX CULVERTS - OPSS 1821**

**Price per Metre**

**Design Earth Cover: 0.6m - 3.5m**

INSIDE DIAMETER (mm)	WALL THICKNESS (mm)	LAY LENGTH (m)	APPROX. MASS (kg/m)	PRICE (\$ per m)
1800 x 900	203	2.3	3,390	\$3,060.30
1800 x 1200	203	2.3	3,750	\$3,340.50
2400 x 1200	203	2.3	4,366	\$4,262.30
2400 x 1500	203	2.3	4,665	\$4,566.30
2400 x 1800	254	2.3	6,287	\$4,871.30
3000 x 1500	254	2.3	6,682	\$6,668.90
3000 x 1800	254	2.3	6,971	\$7,051.00
3000 x 2100	254	2.3	7,350	\$7,430.00
3000 x 2400	254	2.3	7,737	\$7,807.90

**BOX CULVERTS - CHBDC**

**Price per Metre**

**Design Earth Cover: 0.0m - 0.6m & 3.5m - 5.0m**

INSIDE DIAMETER (mm)	WALL THICKNESS (mm)	LAY LENGTH (m)	APPROX. MASS (kg/m)	PRICE (\$ per m)
1800 x 900	203	2.3	3,390	\$3,851.20
1800 x 1200	203	2.3	3,750	\$4,189.60
2400 x 1200	203	2.3	4,366	\$5,358.00
2400 x 1500	203	2.3	4,665	\$5,785.30
2400 x 1800	254	2.3	6,287	\$6,096.40
3000 x 1500	254	2.3	6,682	\$8,201.40
3000 x 1800	254	2.3	6,971	\$8,545.00
3000 x 2100	254	2.3	7,350	\$8,990.70
3000 x 2400	254	2.3	7,737	\$9,440.30

Notes:

- 1) Prices includes joint filter fabric and butyl tape
- 2) Lay length of sections will depend on overall length of culvert run.
- 3) 2.3m maximum lay length
- 4) Bends - multiply the price per metre by 5.0.
- 5) Skewed Ends - add 20% to the price of straight box units.
- 6) All culverts include flush end units
- 7) 1200mm transition opening - add \$1,992.60 to the price of the box unit
- 8) Contact our sales department for all box culvert quotations.**
- 9) The above pricing does not account for site specific irregularities.**

## CUSTOM BOX CULVERTS

Please contact our sales department for quotations and any technical related inquiries.  
With our modular formwork, Coldstream Concrete can produce span/rise required.

4 SIDED BOX



OPEN BOTTOM



ALL SKEWED



CLAM SHELL



Notes:

1) Removable top culverts also available



**BOX MAINTENANCE HOLES & CHAMBERS**

**Details**

All chambers priced on a per chamber basis. Coldstream Concrete can manufacture any size and design. Please contact our sales department.

**PUMP CHAMBER**



**MAINTENANCE HOLE**



**VALVE CHAMBER**



**HOLDING TANK**



**DRAIN TILE**

**Price per Meter**

INSIDE DIAMETER (mm)	LENGTH (m)	HD / 2000D	2400D
200	1.25	\$17.00	Price on request
250	1.25	\$19.70	Price on request
300	1.25	\$22.80	Price on request
350	1.25	\$26.90	Price on request
400	1.25	\$32.10	Price on request
450	1.25	\$39.70	Price on request
525	1.25	\$49.80	Price on request
600	1.25	\$64.40	Price on request
675	1.25	\$85.00	Price on request
750	1.22	\$107.50	Price on request
825	2.44	\$146.80	Price on request
900	1.95	\$193.10	Price on request

Notes:

- 1) 300mm x 200m long drain wrap \$135.20 per roll
- 2) 400mm x 200m long drain wrap \$156.00 per roll

**Dimensions and Mass**

INSIDE DIAMETER (mm)	OUTSIDE DIAMETER (mm)	WALL THICKNESS (mm)	MASS PER PIECE (kg/piece)	STANDARD TRUCKLOAD
200	302	51	105	330
250	338	44	114	315
300	388	44	134	260
350	439	45	153	230
400	503	52	205	172
450	566	58	264	134
525	671	73	360	98
600	762	81	486	72
675	857	91	622	58
750	943	97	790	44
825	1,026	94	1,546	22
900	1,200	143	2,287	15

**GEOTEXTILE**

**Price per Roll**

TYPE	ROLL SIZE (m)	1-4 ROLLS (\$)	5-9 ROLLS (\$)	OVER 10 ROLLS (\$)
Randall 150NW	1.5 x 100	\$271.20	\$261.60	\$252.20
Randall 150NW	3.81 x 110	\$682.80	\$658.30	\$643.80
Randall 150NW	4.57 x 110	\$818.90	\$789.70	\$772.20
Randall 200NW	4.57 x 91.4	\$973.60	\$938.80	\$917.90
Randall 300NW	4.57 x 91.4	\$1,297.10	\$1,250.80	\$1,223.00
Randall 200W	3.81 x 132	\$642.40	\$619.50	\$605.70
Randall 315W	3.81 x 110	\$823.50	\$794.00	\$776.40
Stratagrid 350	1.83 x 91.44	Price on Request	Price on Request	Price on Request

**Details**

- Randall 150** Non woven, filtration & drainage 4-8" rip rap, covering catchbasins, separating granular materials, limited strengths stretch to follow contour, gabion walls and ditch lining.
- Randall 200** Non woven, filtration & drainage limited reinforcement. Class 2 MTO 8-12" rip rap, broken concrete, channel lining and creeks.
- Randall 300** Non woven, filtration & drainage limited reinforcement 12-24" rip rap, lighter coastal applications & rivers. Heaviest non woven instock. Heavier available by special order.
- Randall 200W** Woven, provides separation and reinforcement for industrial yards and farm lane applications. Heavy truck parking lots.
- Randall 315W** Woven, provides separation and reinforcement for logging and municipal roads.
- STRATAGRID 350** High performance soil reinforcement product. Offers tensile reinforcement horizontally or vertically.

## TERMS AND CONDITIONS OF SALE

- 1) Pricing subject to change without notice.
- 2) Pricing based upon full truck loads. If individual or partial loads are requested an additional charge may apply.
- 3) Connections to existing pipe stubs are the sole responsibility of the contractor. Coldstream Concrete Ltd is not laible for product not matching up to existing.
- 4) All deliveries based on a maximum of 2 hours of waiting time for trucks on-site, additional wait time will be charged as an extra.
- 5) Deviation from noted structure components may result in a change of pricing.
- 6) Be advised that no cast iron cover, no access hatch, no grade adjustment, nor chimney have been included in this quotation unless otherwise noted.
- 7) No holdback under lien legislation is allowed for in this quotation.
- 8) Coldstream Concrete Ltd. reserves the right to re-price any aspect of the above quotation if there are any alterations to, and/or omissions on the tendering information received.
- 9) External water-proofing by others.
- 10) Contractor may be responsible for off-loading.
- 11) Quotation Firm for 120 Days.
- 12) Taxes: Extra.
- 13) FOB: Job Site.
- 14) Terms: NET 30 days, 3% cash discount on pre-tax invoice amount if payment in full is received by the 25th of the month following; OAC.